

PYROVIEW 380 & PYROVIEW 320

Industrial Infrared Cameras



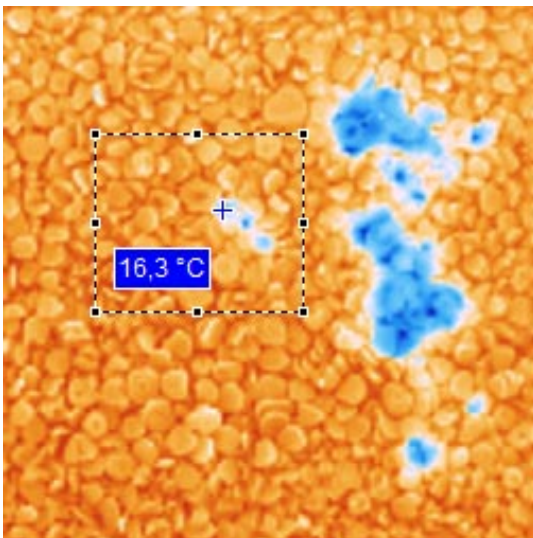
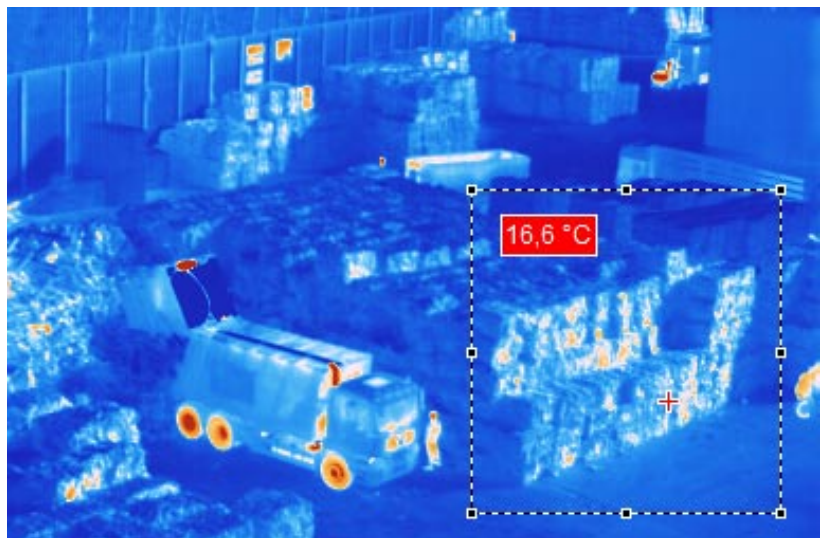
Features

- Precise non-contact temperature measurement over the range $-20\text{ }^{\circ}\text{C}$ to $1250\text{ }^{\circ}\text{C}$ in different spectral ranges
- Measurement frequency 50 frames per second
- Robust housing for use in harsh environments (to IP 65 Standard) with optional water-cooling system and air purge
- Uncooled microbolometer with 384×288 pixels or 320×240 pixels
- Lenses with different fields of view
- Real-time data acquisition via Fast Ethernet, optional via fibre optics
- Option of stand-alone operation without computer
- Triggered measurements
- Alarm and threshold monitoring
- 16 bit A/D converter
- Customized system solutions with modified hardware and software
- No US export license necessary

Applications

PYROVIEW cameras provide instant non-contact measurement of 2D temperature distributions with high thermal and spatial resolution. All models are specially designed for long-term use in harsh industrial environments.

For general measurements the spectral ranges $8\text{ }\mu\text{m}$ to $14\text{ }\mu\text{m}$ and $3\text{ }\mu\text{m}$ to $5\text{ }\mu\text{m}$ are available. The spectral range $4.8\text{ }\mu\text{m}$ to $5.2\text{ }\mu\text{m}$ has been specially designed for measurements on glass.



Software

The powerful online software PYROSOFT for Windows® allows you to control the camera and record, view, manipulate and store the measured data. Specific features are:

- Real-time data recording
- Definition of zones and monitoring of alarm thresholds
- Analysis of trends
- Data export (text, bitmap, video)
- Process control via PROFIBUS, analog and digital inputs, outputs, and other interfaces

A programming interface (Windows®-DLL) is available for system integration.

PYROVIEW 380 & PYROVIEW 320

Industrial Infrared Cameras

Model	Spectral Range ¹	Temperature Measurement Range ¹	NETD ²	Field of View ¹
PYROVIEW 380 (384 × 288 pixels)				
PYROVIEW 380L	8 μm to 14 μm	Range 1: -20 °C to 120 °C, Range 2: 0 °C to 500 °C	0.08 K (30 °C, 50 Hz)	30° × 23° (optional 59° × 46°, 15° × 12°, 10° × 8° ⁴ , macro 80 μm)
PYROVIEW 380M	3 μm to 5 μm	Range 1: 100 °C to 300 °C, Range 2: 200 °C to 500 °C	0.5 K (200 °C, 50 Hz)	30° × 23° (optional 51° × 40°, 15° × 12°)
PYROVIEW 380G	4.8 μm to 5.2 μm	Range 1: 200 °C to 500 °C, Range 2: 400 °C to 1250 °C	1 K (300 °C, 50 Hz)	30° × 23° (optional 51° × 40°, 15° × 12°)
PYROVIEW 380F	3.9 μm	600 °C to 1250 °C	1 K (600 °C, 50 Hz)	30° × 23° (optional 51° × 40°, 15° × 12°)
PYROVIEW 320 (320 × 240 pixels)				
PYROVIEW 320L	8 μm to 14 μm	Range 1: -20 °C to 120 °C, Range 2: 0 °C to 500 °C	0.08 K (30 °C, 50 Hz)	25° × 19° (optional 50° × 39°, 13° × 10°, 9° × 6° ⁴ , macro 80 μm)
PYROVIEW 320M	3 μm to 5 μm	Range 1: 100 °C to 300 °C, Range 2: 200 °C to 500 °C	0.5 K (200 °C, 50 Hz)	25° × 19° (optional 44° × 33°, 13° × 10°)
PYROVIEW 320G	4.8 μm to 5.2 μm	Range 1: 200 °C to 500 °C, Range 2: 400 °C to 1250 °C	1 K (300 °C, 50 Hz)	25° × 19° (optional 44° × 33°, 13° × 10°)
PYROVIEW 320F	3.9 μm	600 °C to 1250 °C	1 K (600 °C, 50 Hz)	25° × 19° (optional 44° × 33°, 13° × 10°) ³

Measurement Uncertainty²

2 K (measured temperature < 100 °C) or 2 % of the measured value in °C

Measurement Frequency

internal 50 Hz, selectable: 50 Hz, 25 Hz, 12.5 Hz, ...

Response Time

internal 40 ms, selectable: 2/measurement frequency

Interfaces

Fast Ethernet (real time, 50 Hz), optional fibre optics
electrically isolated digital inputs (trigger) and digital outputs (alarm)

Camera Housing

Protection to IP 65 Standard. Options include integrated water cooling system and air purge, and fixed or swivel mounting base.
Wt. approx. 3.2 kg

Camera Operating Temperature Range

-10 °C to 50 °C (without water-cooling), -25 °C bis 150 °C (with water-cooling)

Storage Conditions

-20 °C to 70 °C, rel. humidity 95 % max

Software

Control and imaging software PYROSOFT for Windows®, customized modifications on request

¹ Others available.

² Specification for black body reference and ambient temperature 25 °C.

³ On request with special lens for combustion chambers e.g. (43° × 33°, 61° × 48° with inclination).

⁴ NETD < 0.2 K (30 °C, 50 Hz).

Technical details are subject to change without notice. April 2008.

Svensk generalagent och distributör:

Sensotest AB - Girovägen 13 - 17562 Järfälla

Tel: 08-56473380 - Fax: 08-56473389 - www.sensotest.se - info@sensotest.se

DIAS Infrared GmbH · Gostritzer Straße 63 · D-01217 Dresden · Germany

phone: +49 351 8717228 · fax: +49 351 8717230

e-mail: info@dias-infrared.de · internet: www.dias-infrared.com

