



# More Precision.

**wire**SENSOR

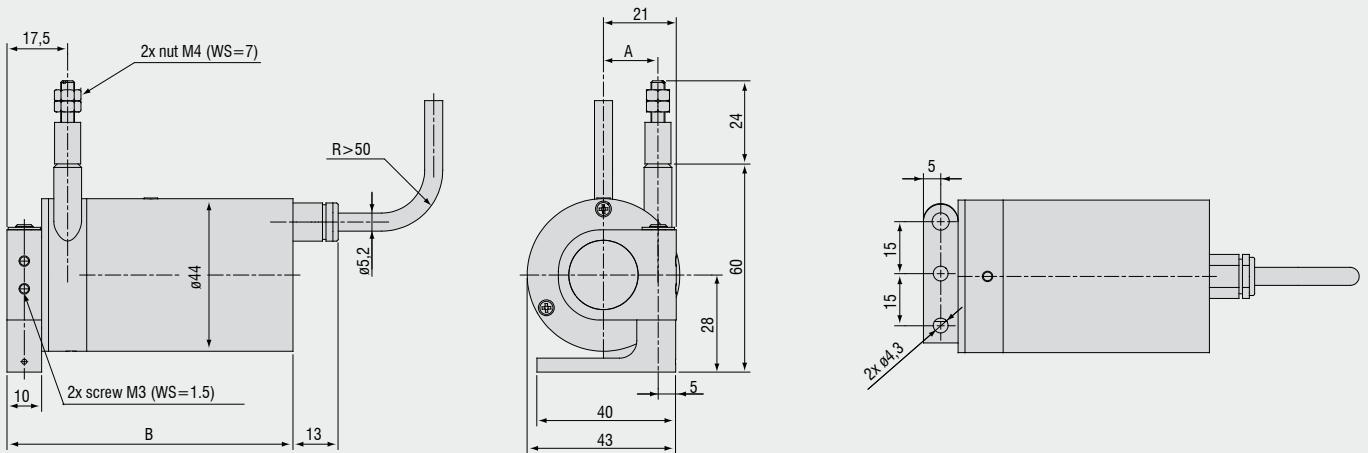
Draw-wire displacement sensors





- Miniature design
- Optional IP 67 (MPW)
- For fast measurement and harsh environments

### Model MP / MPW



Measuring range (mm)	A (mm)	B (mm)
100 / 300 / 500 / 1000-MP	15.7	82.5
100 / 300 / 500 / 1000-MPW	15.7	86.5

Model		WDS-100 MP(W)	WDS-300 MP(W)	WDS-500 MP(W)	WDS-1000 MP(W)
Output		P			
Measuring range		100mm	300mm	500mm	1000mm
Linearity	±0.1% FSO	-	-	0.5mm	1mm
	±0.25% FSO	-	0.75mm	-	-
	±0.5% FSO	0.5mm	-	-	-
Resolution		0.15mm	0.2mm	quasi infinite	
Sensor element		wire potentiometer		hybrid potentiometer	
Temperature range		-20 ... +80°C			
Material	housing	Aluminium			
	draw wire	stainless steel (ø 0.45mm)			
Wire mounting		thread M4			
Sensor mounting		swivel flange in two axes 180° / 360°			
Wire acceleration		appr. 30g			
Wire retraction force (min)		7N	7N	6.5N	5N
Wire extension force (max)		8.5N	8.5N	8.5N	8N
Protection class	series MP	IP 65 / DIN EN 60529			
	series MPW	IP 67 / DIN EN 60529			
Electrical connection		integrated cable, axial, 3-leads, 1m long			
Weight		appr. 270g			

FSO = Full Scale Output  
 Specifications for analog outputs on page 43.

#### Article description

**WDS - 100 - MP - C - P**

Output option:  
P: potentiometer

Connection:  
C: integrated cable, axial, 1m

Model MP / MPW (IP67)

Measuring range in mm

## High performance sensors made by Micro-Epsilon



### Sensors and systems for displacement, position and dimension

Eddy current displacement sensors  
Optical and laser sensors  
Capactive sensors  
Linear inductive sensors  
Draw wire displacement sensors  
Laser micrometer  
2D/3D profile sensors (laser scanner)  
Image processing



### Sensors and systems for non-contact temperature measurement

IR handheld  
Stationary IR sensors  
Thermal imager



### Turn key systems for quality inspection

of plastics and film  
of tires and rubber  
of endless band material  
of automotive components  
of glass



**MICRO-EPSILON**

#### MICRO-EPSILON Headquarters

Koenigbacher Str. 15 · 94496 Ortenburg / Germany  
Tel. +49 (0) 8542 / 168-0 · Fax +49 (0) 8542 / 168-90  
info@micro-epsilon.com · www.micro-epsilon.com

#### MICRO-EPSILON UK Ltd.

Unit 1 Pioneer Business Park · Ellesmere Port · CH65 1AD  
Phone +44 (0) 151 355 6070  
info@micro-epsilon.co.uk · www.micro-epsilon.co.uk

#### MICRO-EPSILON USA

8120 Brownleigh Dr. · Raleigh, NC 27617 / USA  
Phone +1/919/787-9707 · Fax +1/919/787-9706  
info@micro-epsilon.us · www.me-sensor.com