



More Precision.

wireSENSOR

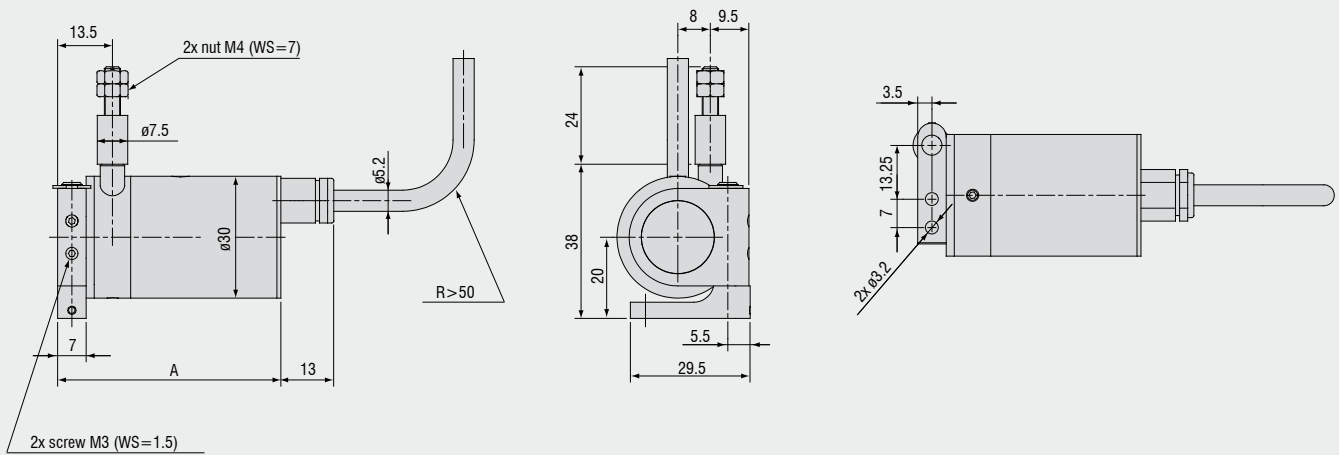
Draw-wire displacement sensors





- Extreme compact miniature sensor
- Flexible mounting via swivel flange
- High speed measurement, wire acceleration up to 100g

Model MPM



Measuring range (mm)	A (mm)
50	55
150 / 250	64
50-HG	61
150 / 250-HG	70

Model		WDS-50 MPM	WDS-150 MPM	WDS-250 MPM
Output			P	
Measuring range		50mm	150mm	250mm
Linearity	±0.2% FSO	-	±0.3mm	±0.5mm
	±0.25% FSO	±0.125mm	-	-
Resolution		quasi infinite		
Sensor element		conductive plastic potentiometer	hybrid potentiometer	
Temperature range		-20 ... +80°C		
Material	housing	Aluminium		
	draw wire	stainless steel (ø 0.45mm)		
Sensor mounting		swivel flange in two axes 180° / 360°		
Wire mounting		thread M4		
Wire acceleration		appr. 25g (Option HG: 100g)		
Wire retraction force (min)		1.5N (Option HG: 10N)		
Wire extension force (max)		3.5N (Option HG: 17N)		
Protection class	DIN EN 60529	IP 65		
Electrical connection		integrated cable, axial, 3-leads, 1m long		
Weight		appr. 150g		

FSO = Full Scale Output

Specifications for digital outputs on page 43.

Article description

WDS - 50 - MPM - C - P - HG

Option HG: Wire acceleration up to 100g

Output option:
P: potentiometer

Connection:
C: integrated cable, axial, 1m

Model MPM

Measuring range in mm

High performance sensors made by Micro-Epsilon



Sensors and systems for displacement, position and dimension

Eddy current displacement sensors
Optical and laser sensors
Capactive sensors
Linear inductive sensors
Draw wire displacement sensors
Laser micrometer
2D/3D profile sensors (laser scanner)
Image processing



Sensors and systems for non-contact temperature measurement

IR handheld
Stationary IR sensors
Thermal imager



Turn key systems for quality inspection

of plastics and film
of tires and rubber
of endless band material
of automotive components
of glass



MICRO-EPSILON Headquarters

Koenigbacher Str. 15 · 94496 Ortenburg / Germany
Tel. +49 (0) 8542 / 168-0 · Fax +49 (0) 8542 / 168-90
info@micro-epsilon.com · www.micro-epsilon.com

MICRO-EPSILON UK Ltd.

Unit 1 Pioneer Business Park · Ellesmere Port · CH65 1AD
Phone +44 (0) 151 355 6070
info@micro-epsilon.co.uk · www.micro-epsilon.co.uk

MICRO-EPSILON USA

8120 Brownleigh Dr. · Raleigh, NC 27617 / USA
Phone +1/919/787-9707 · Fax +1/919/787-9706
info@micro-epsilon.us · www.me-sensor.com