

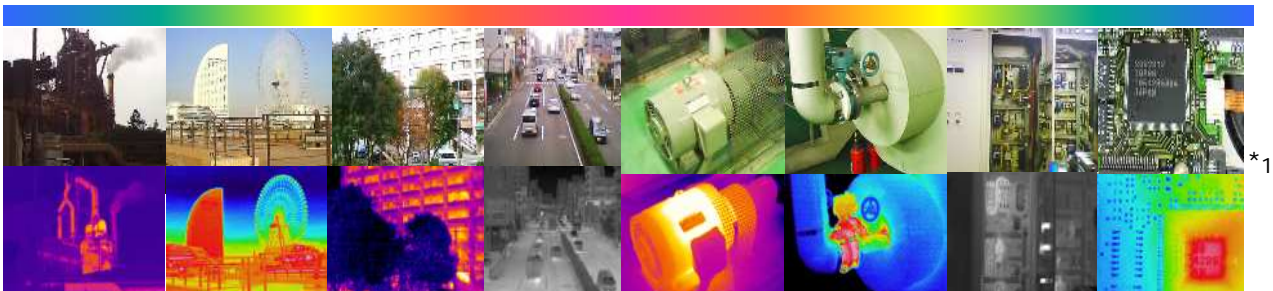
NEW

Thermo Gear G30

Infrared Thermal Imager for General Inspections
Ideal for Predictive/Preventive Maintenance & Building Assessment,
User Friendly Operation with Sophisticated GUI Navigation



Applications



Digital Camera Simultaneous Shooting and Temperature Display on Visible Image	Multi-Lingual Graphical User Interface with Joystick for Easy Operation	Li-Ion Rechargeable Battery Lasting for 5 hours, Lightweight: Approx. 500g only
Fully Radiometric High Quality IR Images	SD Card Direct Recording in JPEG Format for Easy Reporting	Dust/ Splash Proof with IP54-rated Construction
Wide Field of View 28 ° (H) x 21 ° (V)	Focus Free (1.3m~), Auto Level-Sense	Fusion, Analysis and Report by PC Software included
Min Focus Distance: 10cm*1	Alarm and Isotherm	2 Year Warranty

Specifications

Measuring Range	-20 to 350°C
Thermal Sensitivity (NETD)	0.2°C (at 30°C) 0.1°C (with S/N improvement) (at 30°C)
Infrared Detector	Uncooled Focal Plane Array, 160 x 120 pixels
Spectral Range	8 to 13µm
Frame Rate	8.5 frames/sec
Field of View	28°(H) x 21°(V)
Spatial Resolution (IFOV)	3.1mrad
Focus Distance	10cm to Infinity *1 (For Temperature Accuracy: 50cm to Infinity)
Focus	Manual (Focus-Free beyond 1.3m)
Accuracy	±2°C or ±2%, whichever is greater
Visible Light Camera	1.3M pixels CMOS *2 (Focal Distance: 50cm~)
Temperature Display	Center, Max/Min, Moveable (1 point), and T
Emissivity Correction	Yes
Background Compensation	Yes
Isotherm	Yes
Alarm	Display Alarm, Color Alarm
Image Improvement	Yes (Averaging, Median Filter)
Color Palette	Four (4) Types: Rainbow, Iron, Iris, BW
Video Output	NTSC/PAL (RCA)
Image Storage Format/ Medium	Radiometric JPEG/ SD Card
PC Interface	USB2.0 (Mass Storage Function)
Software	InfReC Analyzer NS9500LT
Graphical User Interface's Supported Language	English, French, Spanish, German, Italian, Portuguese, Russian, Finnish, Danish, Norwegian, Swedish, Dutch, Chinese (Traditional, Simplified), Korean and Japanese.
Battery Type/ operating time	Li-Ion Rechargeable/ 5 hours with battery status display (typical)
Operating Temperature	-15°C to +50°C, 90% RH or less
Vibration / Shock	29.4m/sec ² (3G) / 294m/sec ² (30G)
Dimensions	Approx. 80(W) x 209(H) x 123(D) mm
Dust-Splash Proof	IP54
Weight	Approx. 500g (including battery)
Standard Accessories	AC Adapter, Battery Charger, Rechargeable Li-ion Battery, SD Card (1GB), USB Cable, Hand Strap, Software, Operation Manual and Carrying Case
Optional Accessories	Analysis Software (NS9500STD), Tripod, etc.

Graphical User Interface



Simple menu navigation with Joystick for Intuitive Operation



【InfRec】 is the coined abbreviation word of "Infrared Camera" and also has the meaning of (The Device Recording Infrared Information).

Our product research and development is targeted at improving the quality of life by protecting people and simplifying their daily tasks while measuring temperature, controlling environments, enhancing security, etc.

*1. Min. focus distance (10cm): applicable to IR camera. The visible image sample of printed circuit board on the front is not taken by this model. *2. Interpolation made to visible image saved. Company names, merchandise name listed on this brochure are brand or trade mark of each company. Listed specifications/Design, etc. may be subjected to change for improvement without notice. Printed color images may differ slightly from actual product color image.

NEC Avio Infrared Technologies Co.,Ltd

1-5,Nishi-Gotanda 8-chome,Shinagawa-ku,

Tokyo 141-8535 Japan

Phone: +81-3-5436-1614

Fax: +81-3-5436-1395

Email: osd@nec-avio.co.jp

Web: www.nec-avio.co.jp/en/



PC Software

InfReC Analyzer NS9500

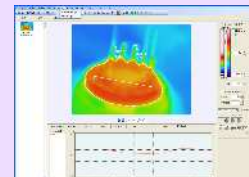
NS9500 Lite: included (NS9500STD: optional)

Thermal Image Processing and Report Generator Software

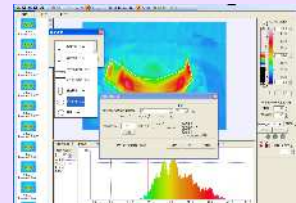
Easily identifiable menu system for user-friendly operation

- Fusion Display of Thermal/ Visual Image
- Easy Report Generation (MS-WORD/ MS-EXCEL Format)

- Subtracting Function for Thermal Image
- Line Profile Display
- Analysis for Max/ Min/ Peak Temperature
- Drawing Function for Designated Point/ Line/ BOX/

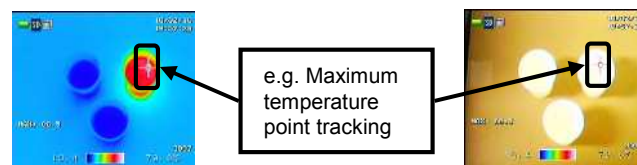


- Optional NS9500STD also features additional functions, as below;
- Drawing Circle/ Polygon Shaped
 - Radiation Heat Quantity Analysis
 - Length Measuring/ Area Calculation
 - Trend Graph Display

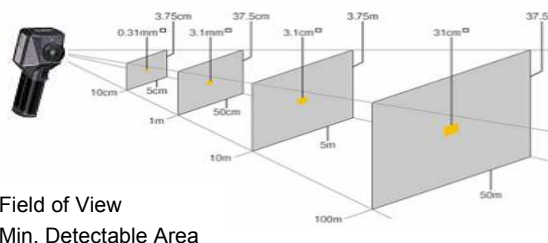


"Measure-on-Picture" Function

All the graphical information overlaid on visible image



Dimensions of Measuring Distance and F.O.V



■ Field of View
■ Min. Detectable Area

NEC Avio Infrared Technologies has long experience and expertise in developing infrared cameras since the early 1970's. There is a wide range of portable and fixed mount thermal imagers available from us.

To find out more, please visit us at: www.nec-avio.co.jp/en/ or contact our local distribution partners.



H2640

G120/100

WARNINGS & CAUTIONS

- Before using this product, please carefully read the provided Operation Manual "WARNINGS" & "CAUTIONS" section to ensure proper operation.
- Please do not place the product in high temperature, high humidity or high inert gas environments.

Distributor:

Svensk generalagent och distributör:
Sensotest AB

Girovägen 13 - 17562 Järfälla

Tel: 08-564 733 80 - Fax: 08-564 733 89

www.sensotest.se - info@sensotest.se

www.varmekamera.se