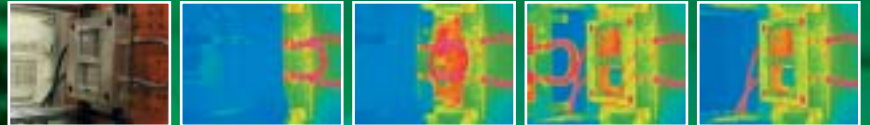


## Infrared Thermal Imager Thermo Tracer TH9100MR/WR

Movie image recordable!! Easy measurement of fast changing objects.

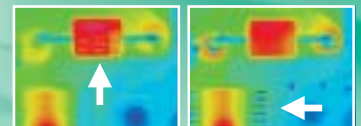
### Moving image (real-time memory)



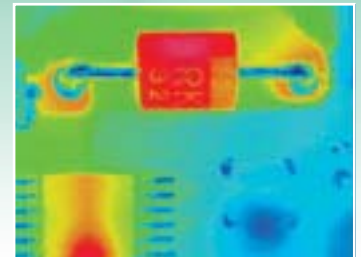
Moving images: opening and closing of a mold



### Multi-focus Image



[Focused on NEAR] [Focused on FAR]



[Multi-focus image (with 95μm close-up lens)]

### High performance UFPA detector

Resolution: 0.02°C (TH9100MR at 30°C,  $\Sigma 64$ )  
Accuracy:  $\pm 2\%$  of reading or  $\pm 2^\circ\text{C}$

### Moving image recordable

Recording time:  
Approx. 27 sec (at 60 frames/sec)  
Approx. 55 sec (at 30 frames/sec)  
Approx. 166 sec (at 10 frames/sec)

### Multi-focus function

Performs edge detection of acquired images, while moving the focus, and fuses them into an image with deeper depth of field (Freeze-frame)

### Visual/thermal image fusion function

Measures visual and thermal images simultaneously and displays the fusion image for easy identification of thermal spots.  
Automatically corrects parallax of thermal and visual images.

### Real-time emissivity correction for multiple points

Emissivity can be set for up to 10 points (Patented)

### Reflective/transmissive color LCD

Clear and sharp images can be obtained by reflected light at daytime and backup light at nighttime.

### Easy operation

Easy-to-use joystick control  
Multilingual menu: (English, French, German, Italian, Japanese, Korean, Portuguese, Russian, Spanish, Simplified Chinese and Traditional Chinese)  
Automatic functions: Level/sense/focus, Level trace & Auto gain control

### Voice recording

Voice memo can be recorded up to 30 seconds per image. A fresh reminder of the field condition.

### Robust design

Dust/splash-proof: IP54  
Shock-proof: 294m/sec<sup>2</sup> (30G)  
Vibration-proof: 29.4m/sec<sup>2</sup> (3G)

